

Ascend

Built on higher standards

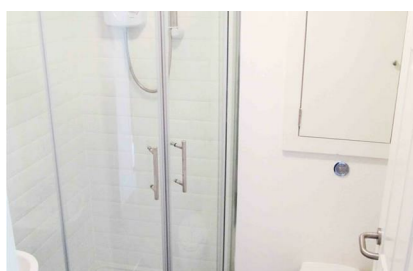
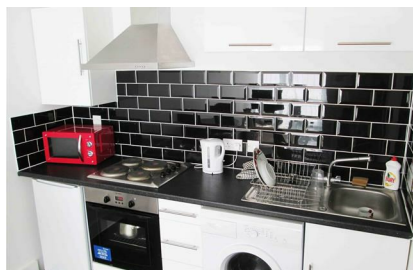
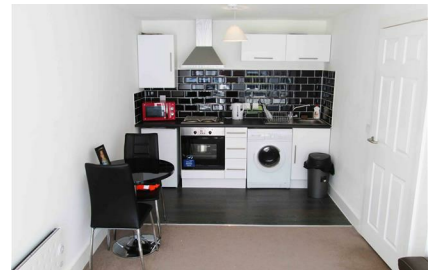


7 Ashley Court Hall Street

Manchester M27 6FL

- Popular development
- Furnished
- Open plan lounge/kitchen
- One bedroom
- Ground floor
- Available 26th January 2026

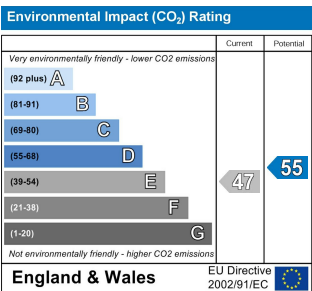
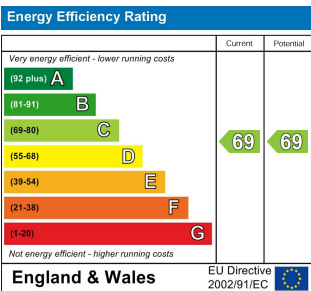
£725 PCM



Step inside Ashley court - a modern and purpose built apartment block. This fantastic one bedroom apartment comprises open-plan living area and kitchen, double bedroom, and shower room. This great property also benefits from being a short walk away from Swinton train station and has easy access to the M60 and A580. This property also comes with bike storage and is available on a furnished basis.

If you're interested in having a closer look, or have any questions, do get in touch. And just so you know, the pictures for this apartment are for marketing purposes only, so the internal fixtures, fittings and furnishings may vary.

Available 26th January 2026. 12 month tenancy. Deposit £830. Council Tax Band A.



Ascend

Built on higher standards

0161 707 7584

192 Monton Road, Monton, Manchester, M30 9PY

monton.sales@ascendproperties.com,
monton.lettings@ascendproperties.com
www.ascendproperties.com



These particulars, whilst believed to be accurate are set out as a general outline only for guidance and do not constitute any part of an offer or contract. Intending purchasers should not rely on them as statements of representation of fact, but must satisfy themselves by inspection or otherwise as to their accuracy. No person in this firm's employment has the authority to make or give any representation or warranty in respect of the property